



To: Members
Network News
Care Options Network
952-945-4078 February 11, 2008

Now Accepting Admissions for our New Alzheimer's Care Unit at Golden LivingCenter- Excelsior

We are excited to announce that the Alzheimer's Care Unit at **Golden LivingCenter – Excelsior** has been open as of January 31st, 2008. This specialized care unit provides an alternative in residential healthcare for residents with Alzheimer's disease or similar conditions. Every aspect of the unit, from the decor to the meals to the quiet atmosphere, creates a soothing, homelike setting that promotes dignity and allows memory-impaired residents to live life to the fullest. Golden Living's philosophy is to adapt to our residents' needs, not to reorient them to ours.

Be looking out for the invitation to our **Open House on February 28th, 2008** from **9:30- 11:30am**. For questions please contact **Natalie Skow** at:

Golden Living Center - Excelsior
515 Division Street
Excelsior, MN 55331
952-474-5488

Golden Living- Excelsior provides quality healthcare for residents, including those needing skilled nursing, rehabilitation and Alzheimer's care.

alzheimer's
care by golden living

Golden LivingCenter St. Louis Park Proudly Announces a New Assistant Executive Director!

Golden LivingCenter - St. Louis Park is pleased to welcome its newest team member, **David Uselman**. Assuming the role of Assistant Executive Director, David has been with the Golden "Family" since 2006. A native of Wadena, Minnesota David began his Healthcare career at the age of 16 as a maintenance worker at his hometown hospital. David earned his degree studying healthcare and long term care administration at Concordia College in Moorhead, Minnesota. When asked about his career choice, David feels his interest in long-term care blossomed during his practicum experience at Eventide of Moorhead.

In his free time David likes to cycle, golf, coach/play football and attend sporting events. When he is not on the field or in the bleachers you can find David in the kitchen cooking or on the deck grilling. David enjoys the support of working for a company like Golden Living and is excited for the opportunity to meet new co-workers, patients and their families.

Please join us in welcoming **David** to the **Golden LivingCenter - St. Louis Park** team.

Contact Information:
Email: david.uselman@goldenliving.com
Phone: 952-935-0333
Fax: 952-935-6747

golden
living center
St. Louis Park

Augustana Chapel View Welcomes New Administrator Mary Roy

Mary Roy has been in long term care for 28 years. Past experience includes 12 years in Therapeutic Recreation and Music as department director. She has over 16 years experience as an administrator and is regarded as a successful & innovative leader in the healthcare industry. She has a passion for the elderly and those that work with them and truly believes it is her mission to be in this field.

Augustana Chapel View welcomes Mary!



Golden Living Center- Twin Rivers Announces New Admissions/Marketing Coordinator

Golden LivingCenter- Twin Rivers welcomes our new Admissions/Marketing Coordinator, *Jody Carver*. *Jody* and *Mary Lou Struwve*, LSW now coordinate the admissions process for Twin Rivers!

Jody brings with her valuable experience working with seniors and their families, as well as, a wealth of energy to her new role. *Jody* has previously been with Twin Rivers as the Facility Business Office Coordinator. As a local resident her whole life, *Jody* also knows the area surrounding Anoka County well and is an excellent resource for new residents and social workers for the local hospitals.

Please contact *Jody Carver*, Admissions/Marketing Coordinator, with questions and/or assistance regarding resident placement. *Jody Carver* can be reached at **763-252-1049** or Jody.Carver@Goldenliving.com.



Twin Rivers
305 Fremont Street
Anoka, MN 55303

New Voice Extension 68XT Now Available at North Memorial Lifeline



The Lifeline service is built upon the importance of voice-to-voice communication. Our subscribers value the ability to speak directly with a trained and caring Personal Response Associate, but also to know that even if they can't be heard a responder will be sent. Designed for those who live in larger or multi-story homes, the new Voice Extension 68XT enables a second two-way speakerphone in the home to better enable voice communication in remote areas during a Help Call. The 68XT helps reduce the anxiety subscribers may feel over the ability to communicate in an emergency.

For more information call
North Memorial Lifeline at 763-520-5911.

Ebenezer Corporate Office Announces New Director of Sales, Heather Rosenwald

Ebenezer Corporate Office is pleased to introduce our new Director of Sales, *Heather Rosenwald*. Most recently Heather worked as the Director of Marketing for Ebenezer's Minneapolis Campus. Heather came to Ebenezer with 17 years of sales and marketing experience in the Twin Cities area. Before deciding to pursue her interest in working with seniors, Heather worked with start-up companies, private practice physicians, surgery centers and in large clinic settings.

Heather can be reached at **612-767-7780** or by e-mail at hrosenw1@fairview.org.

Augustana Chapel View Welcomes New Director of Nursing, Patti Boller

Patti Boller has been in the long term care industry for 25 years. Past experience includes working as a nursing assistant, staff nurse, charge nurse, nurse manager and assistant director of nursing all in the Minneapolis area. For the past 16 years Patti has been the Director of Nursing at a facility in Detroit Lakes. The staff at **Augustana Chapel View** are very excited about the expertise and clinical skills she brings to the facility.



Episcopal Church Home Director of Maintenance helps maintain Saint Paul Winter Carnival tradition

Dan Leach is the newest member of the Krewe of Vulcans. During this year's Saint Paul Winter Carnival, his seven-member Krewe and Vulcan King Rex 71 visited nearly 200 hospitals, nursing homes, schools and day care centers to hasten the spring thaw. In the year ahead, the Vulcans will participate in charity fund raisers, parades and festivals throughout the state. "We are proud of *Dan's commitment to community service,*" says Church Home administrator **Mike Karel**, "and we support him all the way." The photo shows the Vulcans sharing their 1932 fire truck with **Episcopal Church Home** residents. **Evelyn Scherman**, the resident on the left, was a Princess for Montgomery Ward back when the fire truck was new. She is happy to see Winter Carnival traditions live on through the tireless efforts of volunteers like Dan.



Exciting New News! At Golden Living Center - Hillcrest of Wayzata's Alzheimer Care Unit



Golden Living Center - Hillcrest of Wayzata is pleased to announce that we now offer monthly Psychiatrist visits on our Alzheimer Care Unit.

Dr. Jeffrey Sawyer visits our residents the 1st Friday of each month from 1:00 –5:00pm

Our Alzheimer Care Director **Rena Shore, RN** has recently increased her credentials and is now a Certified Dementia Practitioner.

Did you know?

That we can offer short term rehab to our Alzheimer's/Dementia Care Residents?

The best part about this service, is our residents can benefit from both our therapy and Nautilus Service, while taking part in the programming that our ACU Unit Provides.

Golden Living Center - Hillcrest of Wayzata
15409 Wayzata Blvd
Wayzata, MN 55391
952-404-7398

February is American Heart Month!

Congestive Heart Failure (CHF) is the #1 cause for hospitalization for patients over the age of 65. At **Intrepid Home Care**, we have a Congestive Heart Failure disease state management program that is dedicated to educating and improving the quality of life and functional abilities of our clients. Some of the things this specialty program focuses on include:

- Disease education
- Symptoms and lifestyle management
- Medication compliance throughout their disease
- Nutritional and weight education
- Stress and exercise techniques
- Self-care and caregiver tips

The Congestive Heart Failure program is just one of the Clinical Specialty Programs that we provide. If you have any clients you think would benefit from this program, please call: **Intrepid Home Care, 651-636-4663.**



* * * * *

Enter to Win a \$500 Harris Communications Gift Certificate

Be part of the February Leap Year Sweepstakes at **Harris Communications**. When you order you are automatically entered into the sweepstakes to win a \$500 gift certificate. (No purchase is necessary to enter. See website for more details.)

The \$500 Harris Communications gift certificate can be used to purchase hundreds of products on our website, from amplified phones, TV listening devices, and loud clocks to books and DVDs about hearing loss. Harris Communications is "The Better Hearing Store" and has a wide selection of products to assist you or your loved ones.

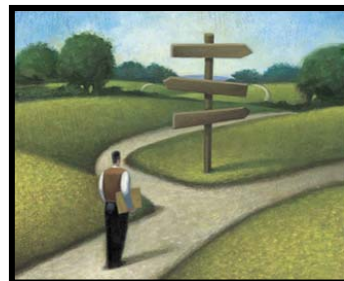
Visit our websites to see all our products. While there, sign-up for our weekly newsletter to be informed of new products and current sales promotions.

Harris Communications

15155 Technology Drive, Eden Prairie, MN 55344
952-906-1180

www.harriscomm.com
www.ezlivingaids.com

"ETHICS" Lunch and learn at Providence Place



The Tools and Process to Support Critical Thinking

Lunch & Learn
at



3720 - 23rd Ave South
Mpls, MN 55407

Tuesday, February 12, 2008
11:00 – 1:00pm

Presenter:

Lisa M. Ellis, M.A. LICSW

Lisa has worked as a social worker in the health care field for 15 years providing social work consultation, case management services as well as specializing in ethics consultation and mediation. She is currently the Co-chair of the National Association of Social Workers, Ethics Committee MN Chapter, and a member of the HealthPartners/Regions Hospital Ethics Committee.

**2 CEU's Will Be Awarded
&
Free Lunch Provided**

Please RSVP by February 11th.
Call William Huseonica 612-968-1361

* * * * *

CEU Presentation to be held at Parkshore Senior Campus

February 12, 2008
9:00am ***Please note time change**

Topic:
"Signs and Symptoms of End Stage CHF/COPD"

Presenter: *Susie Huyer*, RN, CPHN from Heartland Home Health Care & Hospice.

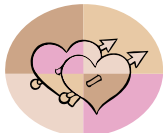
Please join us for muffins, coffee and this NEW presentation.

1 CEU offered

Please RSVP to *Angela* at **952-848-5804**.
Walk-Ins Welcome!

Parkshore Senior Campus - Card Room
3663 Park Center Blvd.
St. Louis Park, MN 55416

* * * * *



Sex and Sexuality after Sixty

Just in time for Valentine's Day, this timely CEU is brought to you by **Sunrise of Golden Valley** and **LivHOME**. In a fun and informative meeting, you will better understand the following:

- Awareness around senior's views on sex and sexuality
- Understand the effects of age on sex and sexuality
- Effects of disease processes on sex and sexuality
- Review of case studies with group participate

Date: February 13th
8:30 - 9:30am
Breakfast will start at 8:15am

Location: Sunrise of Golden Valley
4950 Olson Memorial Highway
Golden Valley, MN 55422

Speaker: Mary Beth Harding, RN, MPH
Area Director, Professional Services **LivHOME**
Please RSVP to Sunrise 763-522-4000 by 2/12.

MNHSWA Meeting (Minnesota Nursing Home Social Worker Association)

The February MNHSWA meeting is on
Friday, Feb. 15th at 8:30am

Host:
Comforts of Home White Bear Lake
1235 Gun Club Road
White Bear Lake, MN 55110

Topic:
"How to Make Early Hospice Referrals"
1 CEU provided

Speaker:
Linda Debner, Hospice of the Twin Cities

* * * * *

Apple Valley Villa Hosts Valentine's Day Open House



February 14, 2008
Join us from **1:00 - 5:00pm** for:

- Music & fun w/Tim Dahl 1:30 - 2:30pm in our Dining Room along with Valentine's Day treats.
- Tour the Villa! We currently have available 1 and 2 bedroom apts. and our 2,000 sq. ft. Penthouse



55+ Senior Apartments
14610 Garrett Ave.
in Apple Valley
952-236-2600
www.AppleValleyVilla.com

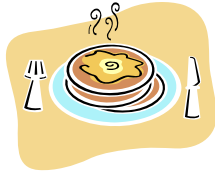
Summerwood of Chanhassen Sponsors Pancake Breakfast and Open House

Saturday, February 16th
Breakfast at St. Hubert's
(Next door to our community)
9:00am ~ 11:00am
Donations Appreciated

SummerWood Open House
9:00am ~ 12:00pm

Summerwood of Chanhassen
A senior living community
525 Lake Drive, Chanhassen, MN 55317
952-294-5500

A partnership of St. Hubert's Catholic Community,
Catholic Eldercare and
Presbyterian Homes & Services



* * * * *

Gentiva is Hosting an Open House Luncheon

You're Invited!!



In honor of celebrating our recent recognition as
one of the nation's "Homecare Elite"
One of the **Top 500** agencies in the country
(**Top 25%**)

Gentiva is hosting an Open House Luncheon:

Wednesday, February 20th
11:00am – 2:00pm

1970 Oakcrest Avenue, Suite 107
Roseville, MN 55113

Please stop in and join us!! We have a lot to
celebrate and want to celebrate with you!

*RSVP by Monday, Feb 18th to **651-636-6330** or
cindy.fussy@gentiva.com



Social Workers In Marketing (SWIM)



Wednesday, February 20, 2008
2:45 – 4:30pm

Topic: “*Uncommonly Effective Promotions*”
Presented by

Speaker: *Paul Miller*, MAS
Sampson Miller Advertising

Paul will be answering the following three
questions: An Introduction to Promotional
Products: What it is and why does it work? Where
is it most effective and how does it fit in the
marketing mix? How to increase ROI and get the
most out of your promotional marketing budget?

Date: Wednesday, February 20th
Time: 2:45-4:30

Location: Golden Living Center Wayzata
(Formerly Hillcrest of Wayzata)
15409 Wayzata Blvd
Wayzata, MN 55391
Keca McGahee
952-473-5466

Take 394 West to Carlson Pkwy exit toward Linner
Rd exit on Linner Rd (Take frontage road around
until you see Golden Living Center on the south
side of 394.)

Thanks for hosting
Golden Living Center of Wayzata!

For more information about **SWIM** contact
Julie Dmohoski at **763-350-5707**.

PRIMERICA Presents Educational Seminar

*"Your Family's Financial Future
WHAT YOU NEED TO KNOW"*

DATE: Wednesday, February 20, 2008
7:00pm Dessert
7:30pm Seminar

LOCATION: North Oaks Golf Club
54 East Oaks Road
North Oaks, MN 55127

SPEAKERS:

**Mark Miller, Senior Vice President
Primerica Financial Services**

*Mark Everswick,
Legg Mason & Co.*

**RSVP: 651-225-1223
Bruce and Diane Kirking**

Many of us know to put our nest eggs in professionally managed hands. Also, most of us know that you should not "put all your eggs in one basket." This seminar is designed to help you find the "right baskets."

An investor should consider the charges, risks, investment objectives, fees, and expenses of a mutual fund carefully before investing. You may request a prospectus from Representative Name at the telephone number below or from PFS Investments Inc. at the address listed below. The prospectus contains this and other information about mutual funds. Read the prospectus carefully before you invest.

We want to help families become debt free and financially independent as quickly as possible.

PRIMERICA
A Citi Company

Local Office:
332 Minnesota St Suite E840
Saint Paul, Minnesota 55101
651-290-9822

Free NORC Health and Wellness Lecture

Wednesday, February 20, 2008
2:30 – 3:30pm

Knollwood Place Apartments
3630 Phillips Parkway, St. Louis Park, MN 55426

"The Magic of Hospice"

Presented by **Robert J. Solheim**, Co-founder and Director of the **N. C. Little Memorial Hospice** in Edina.

Learn more about the history of hospice to the present time, as well as why, when and how to access hospice care and information about the relatively unfamiliar concept of "residential" hospice care.

The lecture is co-sponsored by the St. Louis Park Senior Program, Hopkins Activity Center and NORC (Nurturing Our Retired Citizens). For more information, contact **Joy Gordon**, NORC Community Liaison at **952-542-4819**. No pre- registration is necessary.

* * * * *

Chase that winter chill with a visit to Stonecrest



**Friday, February 22
2:00 - 5:00 pm**

Warm up to friendly neighbors, great amenities, and good times at Stonecrest in Woodbury! Please join us for our Open House showcasing out new Assisted Living community and Town Center. Enjoy a cup of Starbuck's coffee and delicious refreshments while meeting our staff.

For further information,
contact **Kelly** at **651-264-3200**.

Stonecrest
8725 Promenade Lane
Woodbury, MN 55125



Stonecrest

The Brain Injury Association of Minnesota Offers Educational Opportunities

Long-Term Care and Participants with Brain Injury

When: February 21

8:30 a.m. – 4:30 p.m.

Where: Brain Injury Association of Minnesota

Education Center
34 13th Avenue Northeast
Minneapolis, MN 55413

Registration: Participants can gain up to 8 CEUs.
The cost is \$250 per person for the eight-hour training.

Brain Injury Basics II: Adjustment to Disability

When: February 19

6 – 8:30 p.m.

Where: Brain Injury Association of Minnesota

Education Center
34 13th Avenue Northeast
Minneapolis

When: February 25

6 – 8:30 p.m.

Where: Chanhassen Library

690 Coulter Dr
Chanhassen, MN 55317

Registration: The class is free to persons with brain injury and their family members. The registration fee for professionals is \$20.

Community Training

Title: Concussion; Mild Brain Injury, the Most Common Type of TBI

When: Monday, February 25

6 – 8 p.m.

Where: Wilder Room, Chanhassen Library

7711 Kerber Blvd.
Chanhassen, MN 55317

Registration: The class is free to persons with brain injury and their family members. The registration fee for professionals is \$20.

Wednesday Workshops

When: Wednesday, February 27

What: Mild Brain Injury

Where: Brain Injury Association of Minnesota

Education Center
34 13th Avenue Northeast
Minneapolis

Presenter: **David Lund**, LP, Brain Injury Clinic,
Sister Kenney Institute

Registration: The cost to attend one of the workshops is \$40 per person.

For more information or to register for a class, please contact **Janis** at **612-378-2742** or **800-669-6442**.

North Metro Networking Group

WE'RE BACK!

Join us the third Thursday of every other month for a creative networking opportunity and light breakfast. There will be a table available for everyone to share brochures & marketing materials. Be prepared to exchange a few words about your services offered, vacancies, news & events, and employment opportunities.

Hosted by **Rose Arbor & Wildflower Lodge**,
Maple Grove

Co-host **Visiting Angels of St. Louis Park**

Rose Arbor & Wildflower Lodge offer Independent Living, Assisted Living and Memory Care all in a north woods atmosphere! We will be meeting on the 3rd floor in the "Red Room". Tours will be available following the networking meeting.

When: February 21, 2008
8:30 to 9:30 a.m.

Where: Rose Arbor & Wildflower Lodge

16500 92nd Avenue North
Maple Grove, MN 55311

www.rosearbor-maplegrove.com

(North on I 94, exit left onto Co. Rd. 30/ Maple Grove Parkway, South on Dunkirk, left on 92nd Ave. N. (no traffic light).

RSVP to **Brenda, 763-493-1510** or
Carol, 952-544-6300



MAGiC Minnesota Association for Guardianship & Conservatorship

Presents
“Veterans Benefits”

Presented by:
The Department of Veterans Affairs
Ed Erdos
Duane Kamp

Topics to be Addressed:
Fiduciary Benefits
Benefits for Returning War Veterans

Date: Friday, February 22nd
11:00 – 11:30 Registration & Networking
11:30 – 12:00 Lunch
12:00 – 2:00 Presentation

Presentation Location:
The Commons on Marice
1380 Marice Drive
Eagan, MN 55121
651-688-9999

MAGiC Members: No Cost
Non-members: \$10.00 Fee

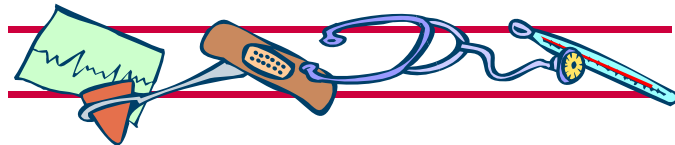
To reserve your seat please contact:
Sandy McGurran at 952-457-3895, or,
smcgconsulting@aol.com
Please RSVP by February 15th

Certificates of attendance will be provided for
2 continuing education credits

Sponsored by MAGiC
www.minnesotaguardianship.org

Golden Valley Rehab & Care Center Presents:

“Your Lungs and the Three BIG PE’S”
(Pulmonary Edema, Pleural Effusion, and
Pulmonary Embolism)



Presentation at
Golden Valley Rehab & Care Center
7505 Country Club Drive
Golden Valley, MN. 55427

Friday, February 22, 2008
Continental Breakfast at 7:00am
Program 7:30 – 8:30am

The program objectives are:

- Understand the pathophysiology of pulmonary edema, pleural effusion and pulmonary embolism.
- Describe the clinical manifestations associated with pulmonary edema, pleural effusion and pulmonary embolism.
- Assess the clinical manifestations of pulmonary edema, pleural effusion and pulmonary embolism in the patient.
- Recognize potential complications of pulmonary edema, pleural effusion and pulmonary embolism in the patient.
- Describe discharge goals for the patient with these conditions.
- Identify nutritional concerns for the patient with pulmonary edema, pleural effusion and pulmonary embolism.

Presenter:
Helen Thul, RCP, RRT

Helen is a practicing respiratory therapist for 25 years. Her experience is with adult medical, surgical, and cardiac ICU patients. She also works with the pediatric patients. She is presently working at Golden Valley Rehab and Care Center as their onsite respiratory therapist.

**One CEU for Respiratory Therapists, Nurses,
and Social Workers.**

Space is limited so please RSVP to *Nette* at
763-545-0416 or email nwilmes@extendicare.com
by February 15, 2008.

Questions about Alzheimer's Disease and Dementia?

We can help....
Golden LivingCenter - Lake Ridge

Join us for our free Family and Friends Alzheimer's Training to learn more about:

- The disease process
- Research and medications
- How to handle difficult behaviors
- How to communicate with loved ones through the various stages of dementia
- Activity Ideas

Date: Saturday, February 23, 2008

Time: 9:00 am-- 2:00 pm

Place: Prince of Peach Lutheran Church
2561 N. Victoria, Roseville
Free lunch included

Training by *Sherri Lage & Carolyn Pegelow*
Alzheimer's Care Program Managers
Golden LivingCenter - Lake Ridge
Please RSVP by Feb 22, 2008 to **651-486-2431**.

* * * * *

The Basilica of Saint Mary Mental Health Ministry presents:

"Alzheimer's Type Dementia: Research, Care, and Supporting Families"

Monday, February 25, 2008

7:00 – 9:00 p.m.

Room LL-7, Basilica School, 88 North 17th Street
(17th and Hennepin), Minneapolis
(Street parking or in the Community College Ramp
at 16th and Hennepin for a nominal fee)

Please Join
Martin Ramsden, Ph. D. Research Associate, John Douglas French Alzheimer's Foundation Fellow, University of Minnesota;
Linnea Grey, MS, Community and Family Education Manager, Alzheimer's Association of Minnesota-North Dakota; and
Brent Longtin, APRN, BC, co-owner and operator **English Rose Suites** and Basilica Mental Health Committee Member as they present the latest research and discuss how to care for those affected by this disease.

A question and answer period will follow and refreshments will be served.

Certificates of Attendance will be available.

Contact **Janet Grove** at **612-317-3508** or jgrove@mary.org with questions or to register for this free presentation.

Prairie Lodge to Host Free CEU Seminar

Prairie Lodge, and Ecumen Community located in Brooklyn Center, is offering a free educational seminar for aging services professionals and family caregivers who are interested in learning more about supporting those affected by Alzheimer's disease and other dementia disorders.

*"Supporting those with Dementia...
Taking the Journey with Them"*

Presented by: **Carol Taylor Braige, RN**,
Program Director
Grace Geriatric Behavioral Health Unit
Regina Medical Center

Wednesday, February 27th
2:30- 4:00 p.m.

Prairie Lodge
6001 Earle Brown Dr., Brooklyn Center, MN 55430

Please RSVP to reserve your space:
Call **763-566-1495 x101**

-or-

Email janellemeyers@ecumen.org

Certificates of Attendance will be provided



* * * * *

Free Breakfast and CEU

Seminar Title: "Diagnosis and Treatment of People with Alzheimer's Disease"

Speaker: Jennifer Olson, M.D.,
Geriatrician and Medical Director of the
Park Nicollet Center for Senior Services

Time: Thursday, February 28, 2008
8:30 to 9:30am

Place: City of Crystal Community Center
4800 Douglas Drive, N., Crystal, MN 55429
The seminar will be in the Activity Room

The seminar is sponsored by Pfizer Pharmaceuticals,
LaCroix Residence, & Home Instead Senior Care

1 free CEU and breakfast will be served.

Please R.S.V.P. to: **1-800-292-6204**,
I.D. 100289810009 (5108908)

Grand Opening Unity Hospital's Geriatric Mental Health Program

Save the Date!

Allina Hospital and Clinics will host an open house to clinical professionals and Allina staff as it opens to its 2nd inpatient **Geriatric Mental Health** program.

Please come tour the unit and network with colleagues. Refreshments will be served.

Open House
Thursday February 28, 2008
2:00 - 4:00pm



Location: Unity Hospital, 3rd Floor
550 Osborne Road
Fridley, MN 55432

For questions or if you cannot make the event and want to schedule a personal tour, please contact **Kim Harju 763-236-4466**.

* * * * *

Reminder: Senior Housing Vacancy Info Due by the 15th

Here is the reminder for independent senior housing members to get your vacancy information submitted for the monthly Senior Housing vacancy report, which will be distributed via fax and email on or after the 15th.

- Housing Agents must notify Care Options of any vacancies by 8:00 a.m. on the 15th.
- Vacancies may be reported by:
 - ▶ Email: dmaurer@voamn.org
 - ▶ Phone: 952-945-4079
 - ▶ Fax: 952-945-4104
- When reporting openings identify property name and type of units available. Do not state number of units, just the type, i.e. Studio, 1 Br., 2 Br. etc.
- Vacancies are not carried over from month to month.

If you have any questions, please contact **Diane** at **952-945-4065** or dmaurer@voamn.org.

Margaret Wallace, LSW is the editor of Network News. All members of **Care Options Network** are invited to submit articles (typed) on staff, programs, facility changes, and any articles of interest. There is **no charge** to place articles in the Network News.

The deadline is 4pm each Thursday.
Email to: mwallace@voamn.org (preferred)
Or fax to: (952) 945-4104
Margaret Wallace Ph.: (952) 945-4078.

A Meeting of the Minds: The Dementia Conference 2008

March 29, 2008
Saint Paul RiverCentre

A Meeting of the Minds: The Dementia Conference 2008 is the most comprehensive and prestigious dementia conference in the upper Midwest. The **Alzheimer's Association Minnesota-North Dakota Chapter** and Mayo Clinic are excited to bring you this day of inspiration and information. Uniquely, persons with early dementia, families, physicians and allied professionals come together for this day of education, sharing and support.

We invite you to:
ENGAGE in keynote addresses and breakout sessions provided by local and nationally recognized experts.

HEAR cutting-edge research, best practice models for service delivery, and valuable resources.

VISIT exhibits and displays and purchase books and CDs from Micawbers Books.

Browse through the brochure and register today at www.alzmnndak.org or **952-857-0538**. The 2007 conference sold out with over 750 attendees, so plans have been made to accommodate a growing interest in dementia skills and care. Early-Bird registration is \$80, which includes the keynote addresses, lunch, workshops and an exhibition/bookfair. Registration after February 27 is \$100. Family scholarships are available.

Family Scholarships are available. To request a scholarship, call **952-857-0538**.

alzheimer's  association

* * * * *

Westwood Staff Development Presents:

"Alzheimer's Disease – Behaviors And Communication"

Speaker: Tim McNamara

Monday, March 10, 2008
10am

Continuing education hours available for nursing staff and social services all staff encouraged to attend.

Westwood Health Care Center
952-546-4261