



Population Health Management
and Advanced Analytics

LVB.com
POWERED BY LEHIGH VALLEY BUSINESS



Construction advances on \$4.3M Alzheimer's, memory care facility

By **Brian Pedersen**, June 4, 2015 at 9:40 AM



(Contributed Photo) Warfel Construction Co. is building Arden Courts, an Alzheimer's and memory care facility in Bethlehem Township.

Construction is under way for Arden Courts of Old Orchard, an Alzheimer's and memory care facility in

Bethlehem Township.

The site could be ready to open by the end of the year, said Paul Vranesic, manager of market development for Arden Courts, which is part of HCR ManorCare, an organization that provides care for patients and residents through a national network. Arden Courts will go up next to the HCR ManorCare skilled nursing facility at 4100 Freemansburg Ave.

Warfel Construction Co. of East Petersburg in Lancaster County is the construction company building the \$4.3 million facility, Vranesic said.

"At Warfel, senior care is a large part of our mix," said Jen Saltzer, director of client services for Warfel Construction. "Over the last 25 years, we have done senior care, higher ed and private schools. We focus primarily on senior care, private education (college and K-12), corporate and historic restoration work."

"Over the past 25 years or so, new construction and renovation of senior care facilities similar to the Arden Courts project have comprised a large percentage of annual workload," Saltzer said.

Construction is expected to be complete in September, she said.

On the inside, the company is working on drywall and mechanical, electrical and plumbing rough-ins. On the exterior, the roof is complete and the company is beginning work on the exterior envelope to include siding and brick, Saltzer said.

The 29,000-square-foot facility will house 64 residents in each wing and includes a dining area, lounges and nursing station, all on one floor.

Arden Courts also has a facility on Hamilton Boulevard in Lower Macungie Township near Allentown.

"We are looking to reach out to the community and share our services," Vranesic said. "Unfortunately, it's a growing disease. We saw a need; our community in Allentown has been running full with a wait list for a while."

The organization specializes in Alzheimer's and memory care and is looking to start support groups for families whose loved ones are faced with the disease. Arden Courts also can draw nationally known speakers to its events, he added.

Once staff is finalized, Arden Courts will have about 60 employees, including 24-hour nursing staff and two caregivers for every 16 residents, Vranesic said.

The site will include a large courtyard, walking paths and a community center, he said.

Arden Courts also hired Susan Schmidt as executive director, and Anna Kelley, a certified dementia practitioner, as marketing director, with both scheduled to start in mid-June.

Share This Story On:

Twitter

Facebook

Google+

LinkedIn



Brian Pedersen

Reporter Brian Pedersen covers construction, development, warehousing and real estate and keeps you up to date on the changing landscape of our community. He can be reached at brianp@lvb.com or 610-807-9619, ext. 108. Follow him on Twitter @BrianLehigh and read his blog, "Can You Dig It," at <http://www.lvb.com/section/can-you-dig-it>.

[+](#) Leave a Comment

0 Comments

Also on LVB.com



Details of revised \$250M City Center project disclosed Ciocca buys Audi, Volkswagen dealerships; plans expansion

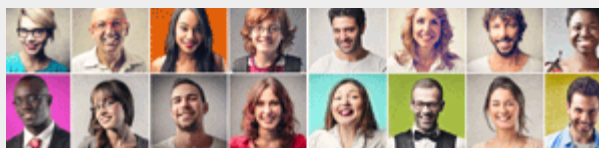


Dietrick merges real estate divisions with Colliers



Population Health Management
and Advanced Analytics

Advanced search



The Neffs National Bank
A Subsidiary of Neffs Bancorp, Inc.
STRENGTH. TRUST. COMMUNITY.

Member FDIC


www.neffsnatl.com

Most Popular

Commented

1 Developer secures real estate, air rights for 33-story tower


- 2 Details of revised \$250M City Center project disclosed
- 3 Employers kick off plan to boost home ownership in Allentown
- 4 Ciocca buys Audi, Volkswagen dealerships; plans expansion
- 5 Controversy brewing over hospital plans to demolish Allentown mansion for medical building




S&S
Custom
HOMES

*Building Quality
Custom Homes for
over 30 Years*

LOTS CURRENTLY AVAILABLE AT
**Mink Hollow
Estates**



**NEW HOMES IN
A GREAT LOCATION**



**ONLY 20 MIN. FROM DOWNTOWN
ALLENTOWN & BETHLEHEM**

Call 570-992-9259

Featured News



One year to go for completion of Route 412 project

Developer secures real estate, air rights for 33-story tower



Controversy brewing over hospital plans to demolish Allentown mansion for medical building



Allentown arena complex named a top regional development project



Jerdon completes renovations for Clear Channel's new HQ



Allentown OKs liquor license for Weis six-pack cafe

FREE Nonprofit Energy Summit
hosted by Sustainable Energy Fund

June 29, 8am-12pm
Green Energy Training Center
Allentown, PA

Learn About:
Energy Management
Energy Efficiency
Energy Audits
HVAC
LED Lighting

REGISTER
WEB: www.theseef.org
PHONE: 610-264-4440
EMAIL: events@theseef.org



LEHIGH VALLEY BUSINESS

[Latest News](#)

[LVB in Print](#)

[Subscribe to Print](#)

ADVERTISING WITH LVB

[Media Kit](#)

[2015 Editorial Calendar](#)

[Event Sponsorships](#)

[Subscribe to Email Newsletters](#)

[Special Editions](#)

[Lists](#)

[Events](#)

[Blogs](#)

[Production Info](#)

CUSTOMER SERVICE

[Contact LVB](#)

[Help & FAQ](#)

[About LVB](#)

[Lehigh Valley Business Staff](#)

[Directions](#)

[Terms of Service](#)

[Privacy Policy](#)

RESOURCES

[Archive Search](#)

[Business Lists](#)

SERVICES

[Employee Engagement Surveys](#)

[Web Design and Development](#)

[Video Production](#)



© 2015 Journal Multimedia. All information on this site is copyrighted by Journal Multimedia. All images are the sole property of Journal Multimedia and no rights are granted for any use without the express written consent of Journal Multimedia.