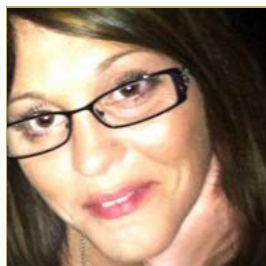




## The Staff of RCG



### Katie Wright

*President  
Chief Executive Officer*

Katie is President and CEO of Right Consulting Group. Her educational background and experience in Healthcare Administration and Management provide a combination of business aptitude and proficient technical knowledge allowing her to embark upon her own healthcare business. She is a tactical team leader, and a proactive communicator. She is a member of the National Association of Professional Women (NAPW), the Small Business Association of Michigan (SBAM), and the Coalition to Protect Auto No Fault (CPAN).

Kate may be contacted directly:

P. 989.640.6524

F. 888.456.0488

[kwright@rightgrp.com](mailto:kwright@rightgrp.com)



### Cindy Pula, RN, LNC, CCM

*Vice President  
Chief Financial Officer*

Cindy is Vice President and CFO of Right Consulting Group. Cindy is a Registered Nurse, Certified Case Manager, and Legal Nurse Consultant.. Her broad past experience is in brain injury rehabilitation, physical therapy rehabilitation, transitional care, and geriatric care. She also possesses a legal nurse education and a case management background. She is a member of the Small Business Association of Michigan (SBAM) and the Coalition to Protect Auto No Fault (CPAN).

Cindy may be contacted directly:

P. 989-640-6970

F. 888-922-0090

[cpula@rightgrp.com](mailto:cpula@rightgrp.com)



### Camille Stuedemann, RN-BC, CCM

*Board Certified Nurse Case Manager*

Camille is a Registered Nurse with over 26 years of nursing experience. She provides medical case management to individuals with catastrophic injuries and chronic medical conditions in the western portion of Michigan and northern Indiana. Camille specializes in medical cases involving neurology and neurosurgical conditions.

Camille may be reached directly:

P. 269.568.0229

F. 888.456.0496

[cstuedemann@rightgrp.com](mailto:cstuedemann@rightgrp.com)

### Christine Call, RN

*Nurse Case Manager*

Christine is an experienced registered nurse and case manager. She has worked many years in a hospital setting, focusing on obstetrics. She has extensive experience in head injury patients. She provides medical case management to individuals with catastrophic injuries and chronic medical conditions in the western portion of Michigan.

#### Select By Region

- [Northern Michigan](#)
- [Central Michigan/ Capitol Area](#)
- [Eastern Michigan/ Detroit Metro](#)
- [Western Michigan](#)
- [Northern Indiana](#)



**Janet Renkiewicz, RN, RAC-CT, CDP, CDCM, CBIS**

*Nurse Case Manager*



Janet is a Registered Nurse with over 13 years of experience. She provides medical case management for individuals with bodily injury and chronic health conditions in lower northern Michigan. Janet specializes in case management for the geriatric population. She has had extensive nursing experience with the elderly providing thorough comprehensive assessments for Medicare and Medicaid reimbursement, education on 'Alzheimer's Disease and Dementia Care', and interdisciplinary care planning and coordination. Her experience as a fall quality assurance coach and manager of a specialized dementia unit has enabled her to recognize and address environmental safety issues allowing optimal independent functioning for the patient. Janet is a member of the National Council of Certified Dementia Practitioners, Resident Assessment Institute, and is a Certified Eden Associate promoting holistic care.

Janet may be contacted directly:

P. 989.640.8128

F. 888.214.7462

[jrenkiewicz@rightgrp.com](mailto:jrenkiewicz@rightgrp.com)



**Rebecca Berner, RN, BA, CCM**

*Nurse Case Manager*

Rebecca is a Registered Nurse with 30 years of nursing experience. She provides medical case management for individuals with bodily injury and chronic health conditions in the metro Detroit area. Rebecca's past experience with critical care and emergency room nursing have enhanced her experience with the rehabilitation needs of adults and adolescents. Her strong communication skills are reflected in her interactions with the medical-legal community.

Rebecca may be contacted directly:

P. 989.640.2005

F. 888.456.0491

[rberner@rightgrp.com](mailto:rberner@rightgrp.com)



**Christine Demler, RN**

*Nurse Case Manager*

Christine is an experienced home health care nurse and case manager, and in the process of earning a BSN. She has served in multiple capacities successfully for multiple agencies over the span of her nursing career. She is certified in wound care, and has extensive experience in hospice and gerontology. She provides medical case management to individuals with catastrophic injuries and chronic medical conditions in the central portion of Michigan..