



<URL:
<http://www.foxsaver.com/>>
Share & Enjoy Pictures!
[sign in](#)
 <URL: /account/login> |
[register](#)
 <URL: /account/signup>

Are Your Parents Living Alone?

24 Hr Peace of Mind

First Month Free

[Learn More](#)

www.LifeWatch-USA.com

Ads by Google

michelle3c

Saving since 1 year 1 week ago!
 Founder of 3M,Inc & 3C Service,Inc : DBA : Complete Compassionate Care; Home Health Care Open 2002. Why Complete Compassionate Care? My nursing career has given me a wide variety of experience, from pediatrics to geriatrics; however, my true passion has always been home health care. Graduating in 1984 from Loma Linda University and becoming a Registered Nurse, I continued to provide care in the home setting. My commitment to superior home care led to the foundation of my own home health agency, Complete Compassionate Care. Since establishing it in 2002, I have worked diligently to promote further education and training among home health care providers across Michigan. To ensure this goal became a Certified Dementia Practitioner Instructor (CDP) accredited by the National Council of Certified Dementia Practitioners (NCCDP) . Providing training to my employees in the areas of dementia and Alzheimer's. I have found, in my years of practice, that health care providers can lose their focus on what is most important. My focus is on helping the client remain in their home for as long as possible, with the best quality care. Not only is caring for the client in their home cost-effective for the caregiver, it is more comfortable and rewarding for the client as well. I believe the focus in home health care should always be on Person-Centered Planning, defined by Michigan Mental Health Code MCLA 330.1700 as the following: Modernizing Michigan Medicaid Long-Term Care Person-Centered Planning is a process for planning and supporting the individual receiving services that builds upon the individuals capacity to engage in activities that promote community life and that honors the individual preferences, choices, and abilities. The Person-Centered Planning process involves families, friends, and professionals as the individual desires or requires. Person-Centered Planning is what the state of Michigan is moving towards and what I believe is the future of home health care. At Complete Compassionate Care, we continuously employ the Person-Centered Planning process to help our clients achieve a higher level of independence and greater quality of life. I firmly believe that compassion is the very foundation of providing care, &compassion is what guides this agency. At Complete Compassionate Care, we strive to "Treat everyone the same, by treating them different." At all times, our goal is to improve our client's quality of life. I have instilled this key value within my company in the hopes of making a difference.



Website: [completecompassionatecare.com](http://www.completecompassionatecare.com) <URL:
<http://www.completecompassionatecare.com>>

published:
 0
 voted up:
 0
 submit:
 0

<http://www.foxsaver.com/profile/michelle3c/rss/all>

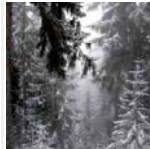
Clubs

<http://www.foxsaver.com/profile/michelle3c/rss/submitted>
Submitted Pictures

http://www.foxsaver.com/profile/michelle3c/rss/voted_up
Voted Up Pictures



<URL: /public/picture/901494099>



<URL: /public/picture/363241698>



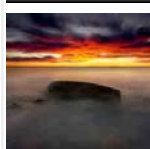
<URL: /public/picture/254205884>



<URL: /public/picture/288454393>



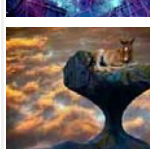
<URL: /public/picture/1016372685>



<URL: /public/picture/1049143356>



<URL: /public/picture/312577089>



<URL: /public/picture/482239509>

Commented Pictures

Ads by Google

[Home Health Software](#)
 Plug In to Connected Care with Homecare Technology Experts
www.thornberlytd.com

[Home Care Software](#)
 Private Duty Software Web. Scheduling/Billing/Telep
folx.com

[Friendly Care For Elderly](#)
 Find A Local Caregiver-Expert 24/7 & Hourly Assistance, Contact Us Now
www.HomeCareAssistance.com

[Find Nursing Homes](#)
 Find Nursing Homes Near You. Free Service with No Obligation!
www.assistedliving.com

[Home Health Mates](#)
 Rapidly expanding home care franchises. Territories nationwide!
www.homehealthmates.com



<URL: /club/horse>



<URL: /public/picture/323128152>



<URL: /public/picture/608125182>



<URL: /public/picture/1030659426>



<URL: /public/picture/547196275>



<URL: /public/picture/693512078>



<URL: /public/picture/814989459>



<URL: /public/picture/679627988>



<URL: /public/picture/260213688>



<URL: /public/picture/902471088>



<URL: /public/picture/487630236>



<URL: /public/picture/285816647>

Comments from others



<URL: /public/picture/170514502>



<URL: /public/picture/450254889>



<URL: /public/picture/618483240>



<URL: /public/picture/372348916>



<URL: /public/picture/214470201>



<URL: /public/picture/776200972>



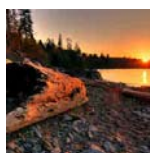
<URL: /public/picture/563059342>



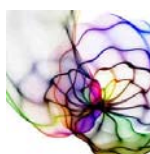
<URL: /public/picture/248073682>



<URL: /public/picture/389231149>



<URL: /public/picture/981986274>



<URL: /public/picture/796099975>